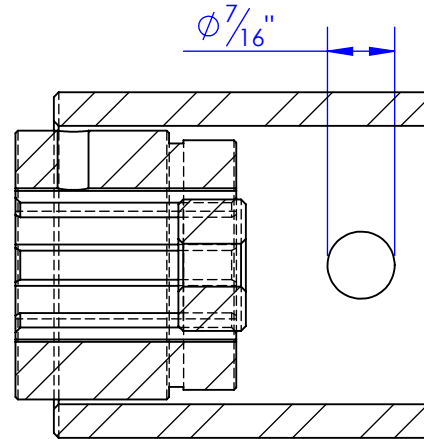
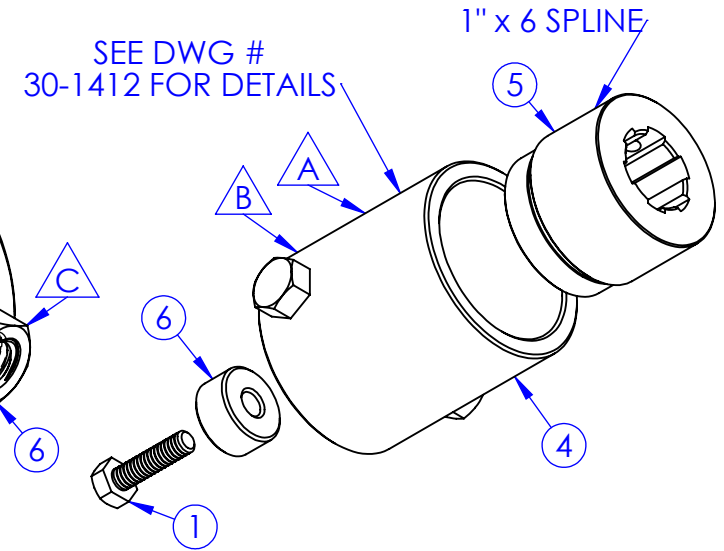
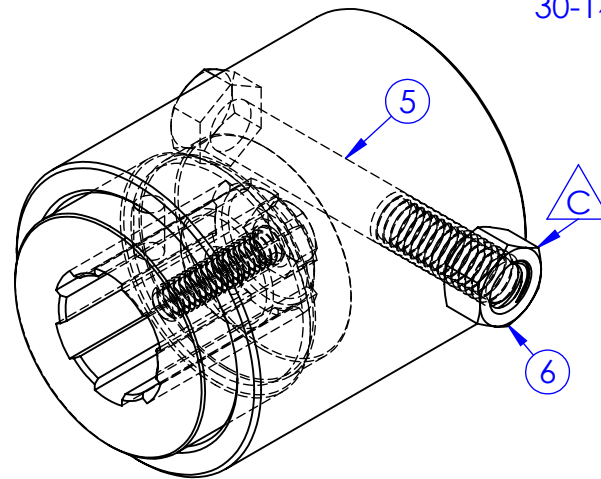
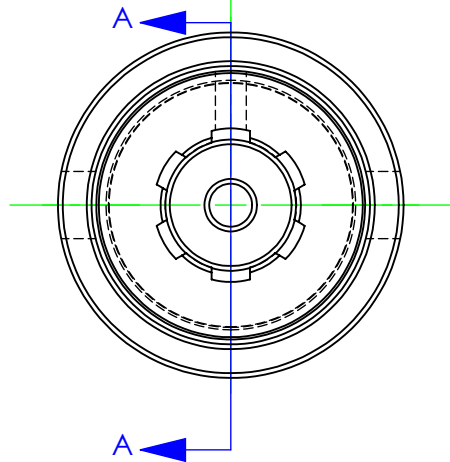
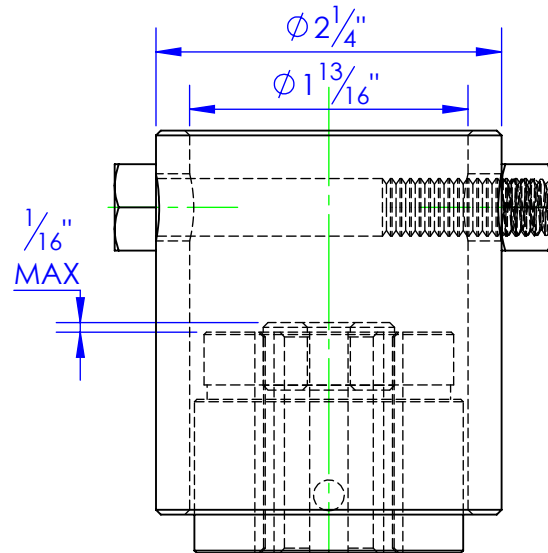
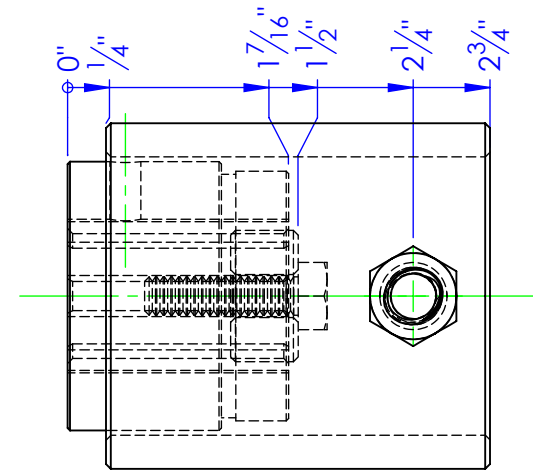


ITEM NO.	PART NUMBER	DESCRIPTION	DRAWING #	EXPLODED/QTY.
1	BO-1/4x1 HCS	BOLT 1/4-20 x 1	STOCK	1
2	BO-3/8x2-1/2 HCS	BOLT 3/8x 2-1/2 GRADE 8	STOCK	1
3	BO-3/8 HLN	3/8" NUT CENTER LOCK	STOCK	1
4	FP-HF-HUB B 1.8 ID	HF BUSHING AUGER 1-13/16 ID	30-1412	1
5	HD-HUB 1x6 SPLINE	WELDAHUB 1x6 SPLINE	STOCK	1
6	HD-SP.853x.44x.28	HF SPACER, .853 ODx.28IDxL.44	30-2212	1

REV.	REVISIONS DESCRIPTION	DATE	APPROVED
A	INITIAL RELEASE	6/29/2012	
B	REPLACED ST-MT 2-1/4 x 1-13/16 L2-1/2 WITH FP-HF-HUB 1.8 ID	9/25/2012	
C	ADDED NUTS & BOLTS TO BOM	10/1/2013	



SECTION A-A



PROPRIETARY AND CONFIDENTIAL
THE INFORMATION CONTAINED IN THIS DRAWING IS THE SOLE PROPERTY OF TRIPLE C INC. ANY REPRODUCTION IN PART OR AS A WHOLE WITHOUT THE WRITTEN PERMISSION OF TRIPLE C INC. IS PROHIBITED.

DIMENSIONS ARE IN INCHES
TOLERANCES:
FRACTIONAL $\pm 1/16$
ANGULAR: MACH ± 1 BEND \pm
TWO PLACE DECIMAL ± 0.10
THREE PLACE DECIMAL ± 0.005

MATERIAL ---

DO NOT SCALE DRAWING

NAME	DATE
DRAWN HEATH	10/1/2013
PART #	HF-HUB SPLINE 1 x 6
ASM #	

COMMENTS:
HYDRA FEEDER
WELDED HUB
SPLINED 1" x 6

P.O. BOX 248,
SABETHA, KS 66534

TRIPLE C
INC.

SIZE A	DWG. NO. 30-1413 C	REV. C
SCALE: 1:1.25 WEIGHT: 1.72		SHEET 1 OF 1